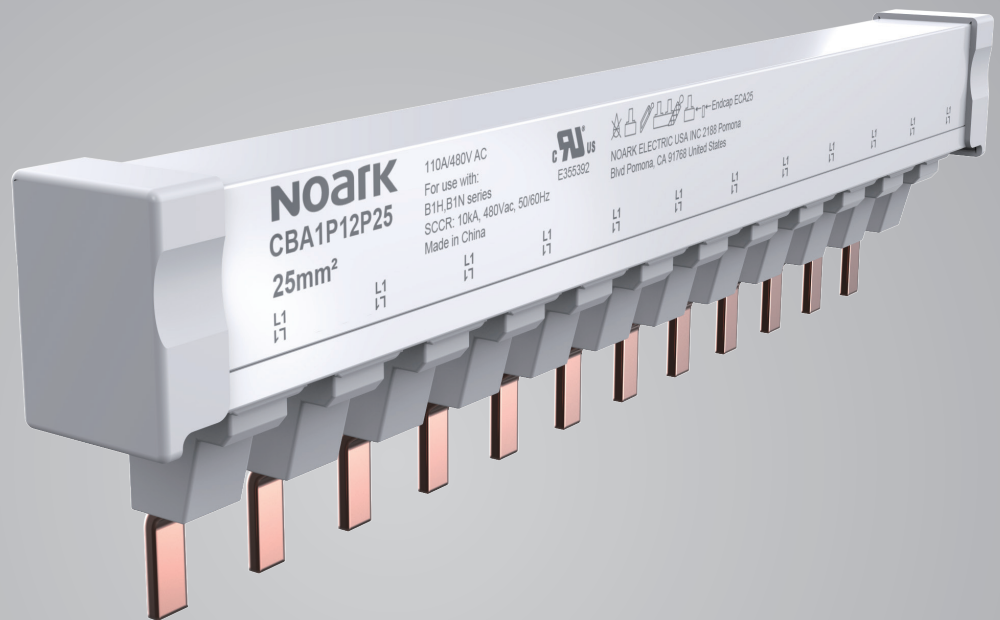


# NOARK®

## Catalog CBA Comb Busbar



## Company Overview

### About us

**NOARK Electric** is a global manufacturer of low-voltage electrical components for industrial applications. We specialize in motor controls and circuit protection for original equipment manufacturers. Our mission is to provide customers with the highest quality products at an exceptional value and back them with world-class service and support. Every NOARK product is tested and certified to the highest industry standards and covered by our exclusive five-year limited warranty.

#### Research and Development

The entire portfolio of high-quality NOARK products is designed for manufacturing and assembly (DFMA). Each component is developed in-house by our engineering team to meet the strictest standards and performance requirements. This dedication to excellence has led to the development of patented technology found in many of our products.

#### World-class Manufacturing

After being thoroughly tested, approved and certified – each NOARK product is sent into production at our state-of-the-art manufacturing facilities. This allows us to maintain strict quality control standards throughout the manufacturing process. In addition, NOARK Electric adheres to a policy of environmental protection and sustainability.

#### North American Distribution

NOARK's primary distribution center is located in Pomona, CA, with the aim of ensuring prompt and reliable deliveries of the entire product range to our customers all over North America. Our supply chain team works closely with our factories and logistics partners to ensure the availability of our products on the North American market and provide logistics services on the level which our customers expect.

NOARK Electric is a wholly subsidiary of the largest electrical manufacturing group in Asia with over 30 thousand employees and sales revenue of \$10 billion USD. We have corporate facilities in Los Angeles, Shanghai and Prague to service the requirements of individual markets and countries.

**140+**  
Countries

**300+**  
Overseas Distributors

**20**  
Overseas Subsidiaries

**22**  
Logistics Centers

**3**  
R & D Centers

**10,000,000+**  
Sq.Ft. Manufacturing Space

**30,000+**  
Employees Worldwide



## CBA Comb busbar

### Table of Contents

#### CBA Comb busbar

|                                  |    |
|----------------------------------|----|
| Features.....                    | 01 |
| Standard and Certification ..... | 01 |
| Product Selection Guide .....    | 02 |
| Specifications .....             | 03 |
| Dimensions.....                  | 04 |
| Accessory Specifications .....   | 05 |
| Accessory Dimensions.....        | 06 |
| Assembly Instructions.....       | 09 |

## CBA Comb busbar

### Features/Standard and Certification

#### Description

CBA comb busbars meet the UL489 certification and are also applicable to miniature circuit breakers meeting the UL489 standard. The maximum rated current can reach 110A, and can be cut to the required length separately. In addition, it can be equipped with up and bottom feed terminals, end covers and protective cover accessories, which can be used for fast wiring of multi branch circuits in control cabinets in North America market.

#### Features

- Convenient installation to enhance the efficiency of customer use.
- Flexible cutting to meet individual customer needs.
- It is fully certified and meets the requirements of UL489 MCB.

---

#### Standard and Certification

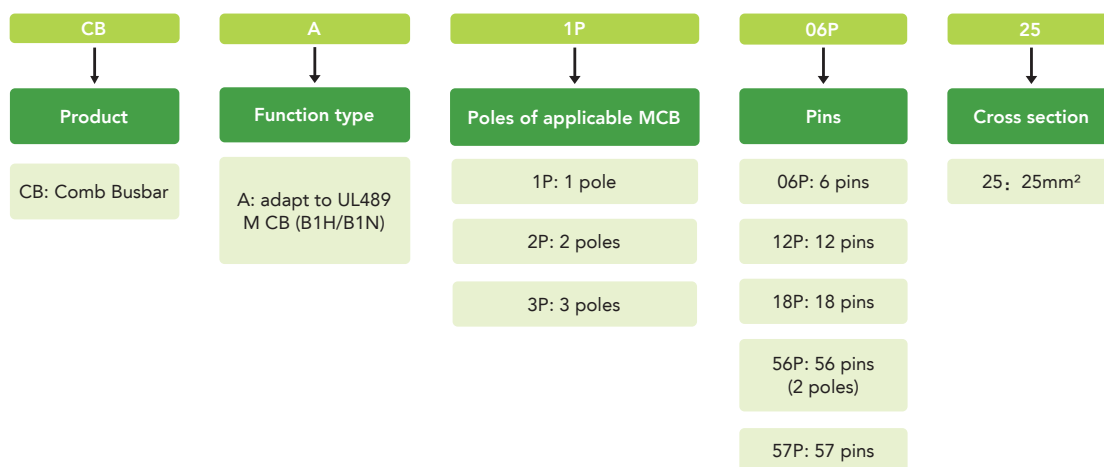
- Comply with UL489, CSA C22.2 No.5, 4th Ed
- Meet RoHS standards
- Adapt to UL489 miniature circuit breaker



## CBA Comb busbar

### Product Selection Guide

## Product Selection Guide



| Product Name                       | CBA Comb busbar               |
|------------------------------------|-------------------------------|
| Applicable standards               | UL489, CSA C22.2 No.5, 4th Ed |
| Environmental requirements         | RoHS                          |
| Certification                      | Adapt to UL489 MCB products   |
| Poles                              | 1P,2P,3P                      |
| Rated working voltage V AC         | 480                           |
| Rated operating frequency Hz       | 50/60                         |
| Rated working current A            | *End feed:100                 |
|                                    | *Center feed: 110             |
| Short circuit current rating       | 10kA @480V AC                 |
| Cross-section mm <sup>2</sup> /AWG | 25/4                          |
| Overvoltage category               | III                           |
| Pollution levels                   | 3                             |

**\*Note:**

End feed: Wiring from the left or right end of the bus bar through the accessories of the feeding terminals, with the maximum current not ex-ceeding 100A;  
 Center feed: Wiring from the middle of the bus bar through the accessories of the feeding terminals, with the maximum current not exceeding 110A.

## CBA Comb busbar

### Specifications

## Ordering Code and Description

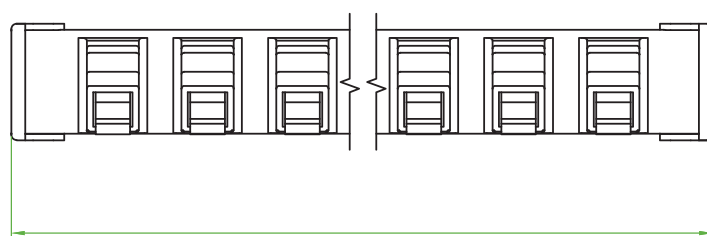
| Ordering code | Material code | Material description             | Poles | Pins | Section cross (mm <sup>2</sup> ) | Net weight (kg) | Depth (mm) | Width (mm) | Height (mm) |
|---------------|---------------|----------------------------------|-------|------|----------------------------------|-----------------|------------|------------|-------------|
| 1002702       | CBA1P06P25    | CBA 1P 6 Pins 25mm <sup>2</sup>  | 1     | 6    | 25                               | 0.09            | 128        | 22         | 57          |
| 1002703       | CBA1P12P25    | CBA 1P 12 Pins 25mm <sup>2</sup> | 1     | 12   | 25                               | 0.18            | 235        | 22         | 57          |
| 1002704       | CBA1P18P25    | CBA 1P 18 Pins 25mm <sup>2</sup> | 1     | 18   | 25                               | 0.3             | 342        | 22         | 57          |
| 1002705       | CBA1P57P25    | CBA 1P 57 Pins 25mm <sup>2</sup> | 1     | 57   | 25                               | 0.95            | 1036       | 22         | 57          |
| 1002706       | CBA2P06P25    | CBA 2P 6 Pins 25mm <sup>2</sup>  | 2     | 6    | 25                               | 0.1             | 128        | 22         | 57          |
| 1002707       | CBA2P12P25    | CBA 2P 12 Pins 25mm <sup>2</sup> | 2     | 12   | 25                               | 0.2             | 235        | 22         | 57          |
| 1002708       | CBA2P18P25    | CBA 2P 18 Pins 25mm <sup>2</sup> | 2     | 18   | 25                               | 0.33            | 342        | 22         | 57          |
| 1002709       | CBA2P56P25    | CBA 2P 56 Pins 25mm <sup>2</sup> | 2     | 56   | 25                               | 1.1             | 1020       | 22         | 57          |
| 1002710       | CBA3P06P25    | CBA 3P 6 Pins 25mm <sup>2</sup>  | 3     | 6    | 25                               | 0.11            | 128        | 22         | 57          |
| 1002711       | CBA3P12P25    | CBA 3P 12 Pins 25mm <sup>2</sup> | 3     | 12   | 25                               | 0.22            | 235        | 22         | 57          |
| 1002712       | CBA3P18P25    | CBA 3P 18 Pins 25mm <sup>2</sup> | 3     | 18   | 25                               | 0.35            | 342        | 22         | 57          |
| 1002713       | CBA3P57P25    | CBA 3P 57 Pins 25mm <sup>2</sup> | 3     | 57   | 25                               | 1.2             | 1036       | 22         | 57          |

## CBA Comb busbar

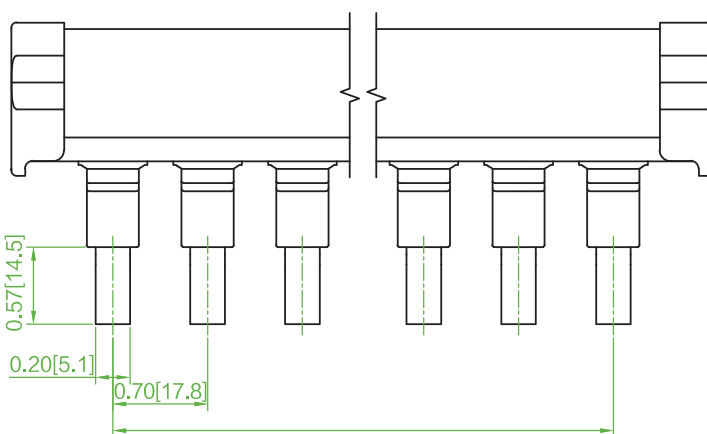
### Dimensions

#### CBA

Unit: in [mm]



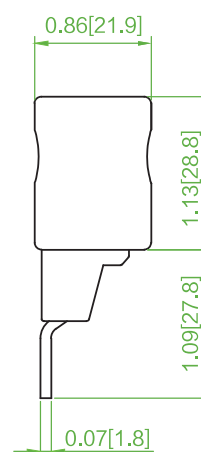
6pins:5.04[128]  
 12pins:9.24[234.8]  
 18pins:13.45[341.6]  
 56pins:40.08[1018]  
 57pins:40.79[1035.8]



0.57[14.5]  
 0.20[5.1]

0.70[17.8]

6pins:3.50[89]  
 12pins:7.71[195.8]  
 18pins:11.91[302.6]  
 56pins:38.54[979]  
 57pins:39.24[996.8]



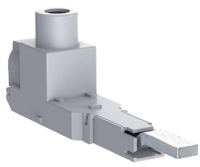
0.86[21.9]

1.13[28.8]

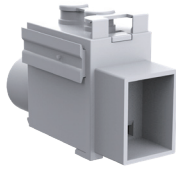
1.09[27.8]

0.07[1.8]

## CBA Comb busbar Accessory Specifications

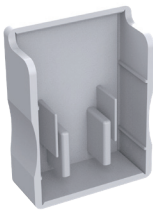


FDA35



FDA50

Instructions:  
Refer to assembly instructions of the up and bottom feeder terminals below.



|                   |                        |  |
|-------------------|------------------------|--|
| FD                | A                      | 35   |
| Product           | Function type          | Wiring capacity  |
| FD: feed terminal | A: adapt to CBA series | 35: 35mm <sup>2</sup><br>(up feeding)<br>50: 50mm <sup>2</sup><br>(bottom feeding) |

|             |                        |   |
|-------------|------------------------|---|
| EC          | A                      | 25  |
| Product     | Function type          | Function code                             |
| EC: end cap | A: adapt to CBA series | 25: adapt to CBA busbar 25mm <sup>2</sup> |

|                      |                        |   |
|----------------------|------------------------|---|
| PC                   | A                      | 25  |
| Product              | Function type          | Function code                             |
| PC: protective cover | A: adapt to CBA series | 25: adapt to CBA busbar 25mm <sup>2</sup> |



## CBA Comb busbar

### Accessory Dimensions

## Technical Data

| Product          | Feeding terminal accessories          |  |
|------------------|---------------------------------------|--|
| Product Model    | FDA35                                 | FDA50  |
| Standard         | UL486                                 | UL486  |
| Rated current    | 110A                                  | 110A   |
| Wiring capacity  | 14-2AWG(35mm <sup>2</sup> ), 75 °C Cu | 14-1AWG(50mm <sup>2</sup> ), 75 °C Cu                      |
| Wiring torque    | 14-10AWG 5Nm;<br>8-2AWG 7Nm.          | 14-10AWG 5Nm;<br>8-1AWG 7Nm;<br>Connect with the bus 3.5Nm |
| Feed direction   | *top feeding                          | *bottom feeding  |
| Adapted products | CBA busbar 1P/2P/3P                   | CBA busbar 1P/2P/3P  |

\*Note: Refer to assembly instructions for details of up and bottom feeding directions

## Ordering codes and descriptions

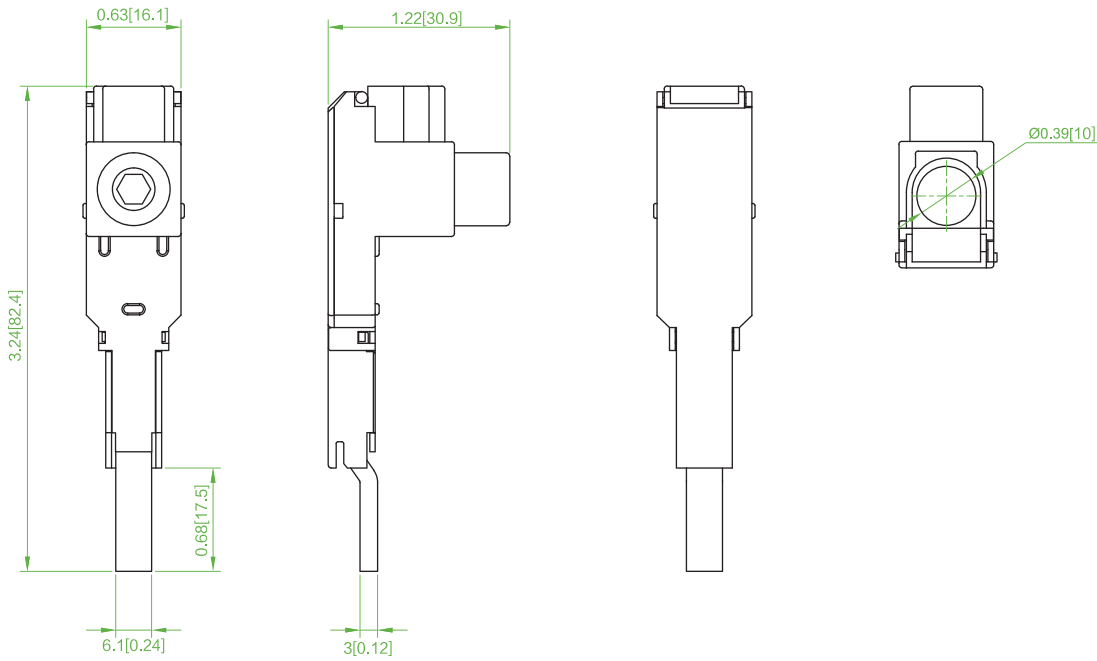
| Ordering code | Material code | Material description    | Poles | Stitches | Section cross (mm <sup>2</sup> ) | Net weight (kg) | Depth (mm) | Width (mm) | Height (mm) |
|---------------|---------------|-------------------------|-------|----------|----------------------------------|-----------------|------------|------------|-------------|
| 1002715       | FDA35         | Up feeding terminal     | -     | -        | 35                               | 0.04            | 82         | 16.5       | 32          |
| 1002716       | FDA50         | Bottom feeding terminal | -     | -        | 50                               | 0.035           | 52         | 18         | 32          |
| 1002714       | ECA25         | End cap                 | -     | -        | -                                | 0.002           | 10         | 22         | 29          |
| 1002717       | PCA25         | Protective cover        | -     | -        | -                                | 0.005           | 49         | 16.5       | 25          |

## CBA Comb busbar

### Accessory Dimensions

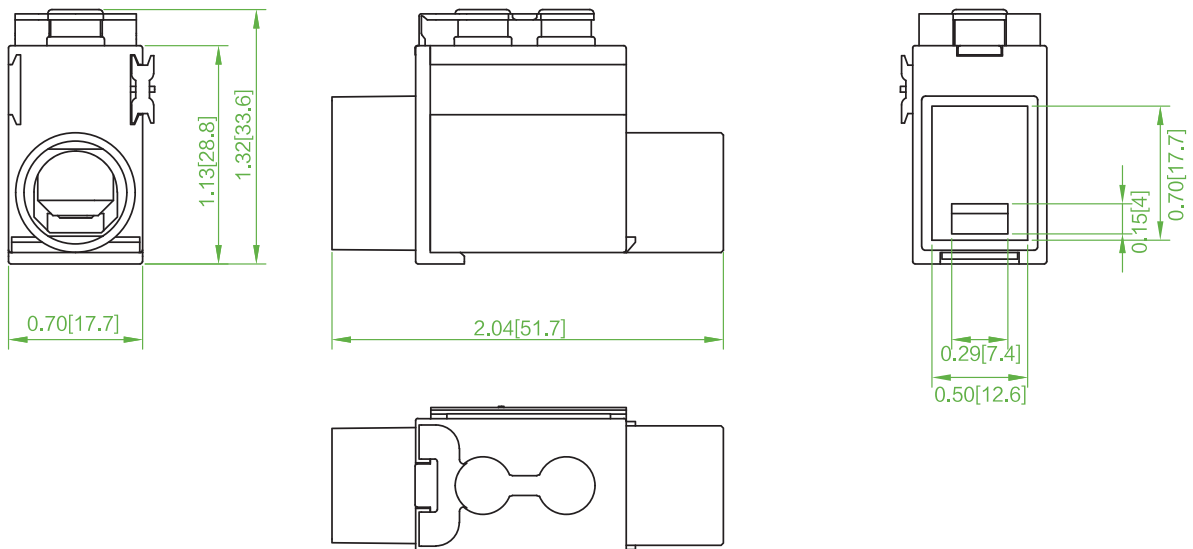
#### FDA35

Unit: in [mm]



#### FDA50

Unit: in [mm]

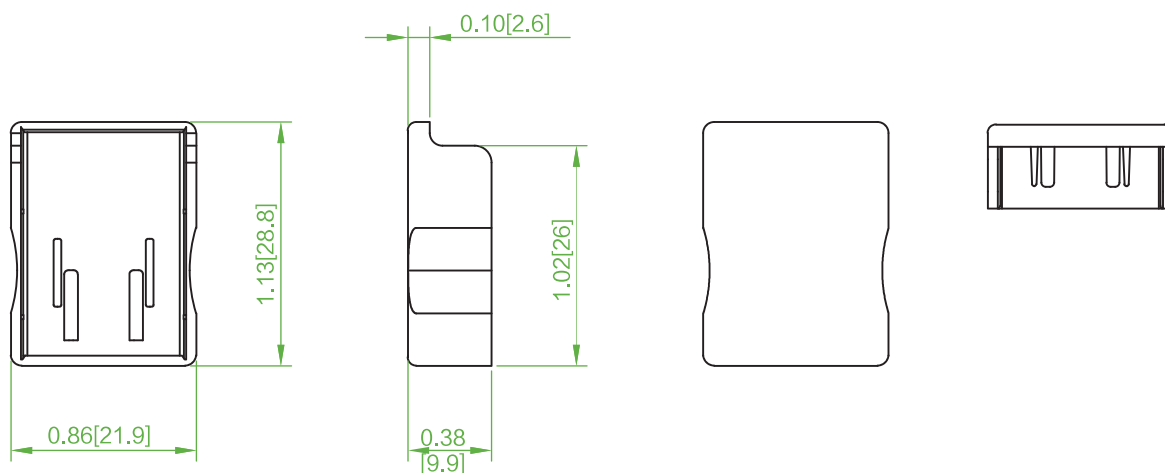


## CBA Comb busbar

### Accessory Dimensions

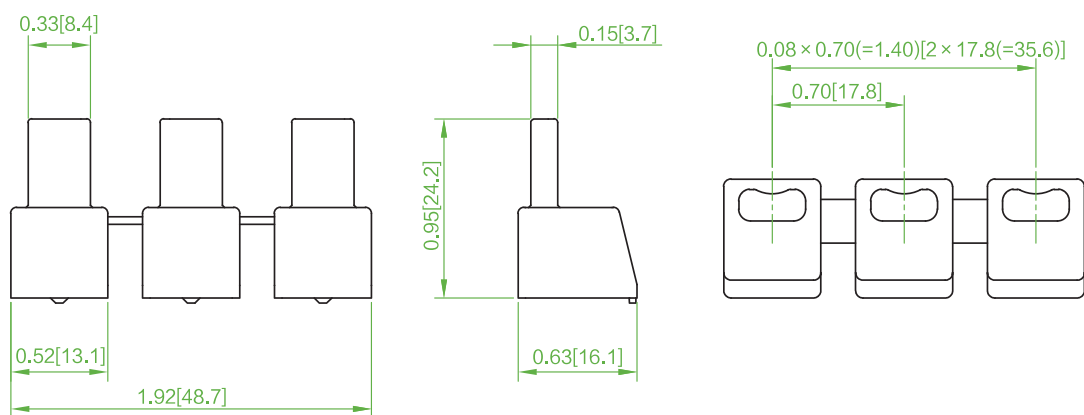
#### ECA25

Unit: in [mm]



#### PCA25

Unit: in [mm]

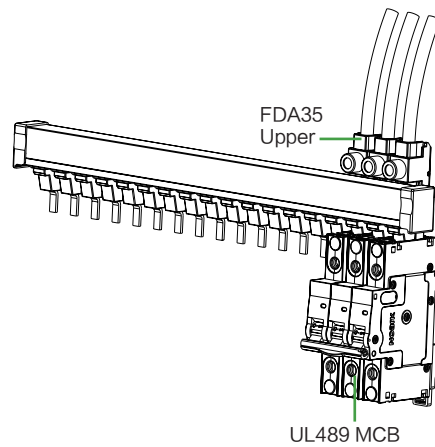
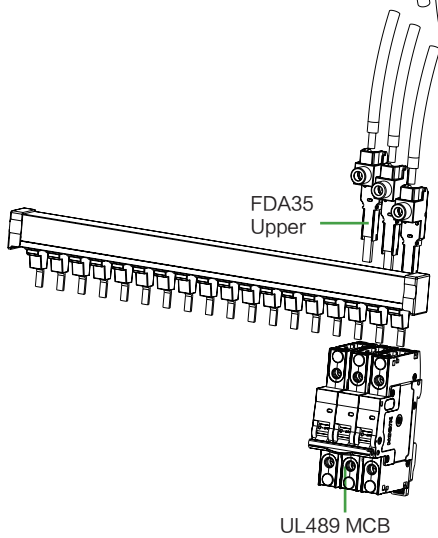
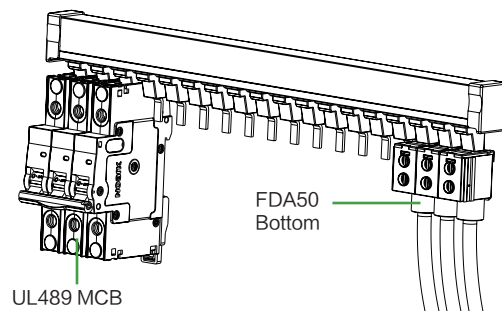
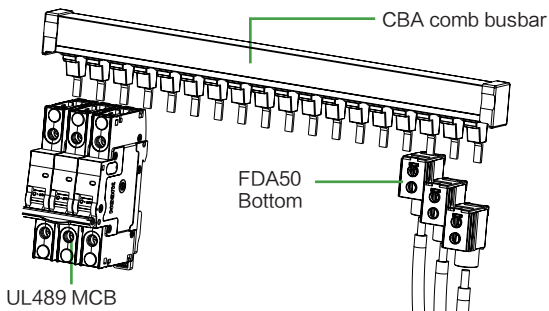
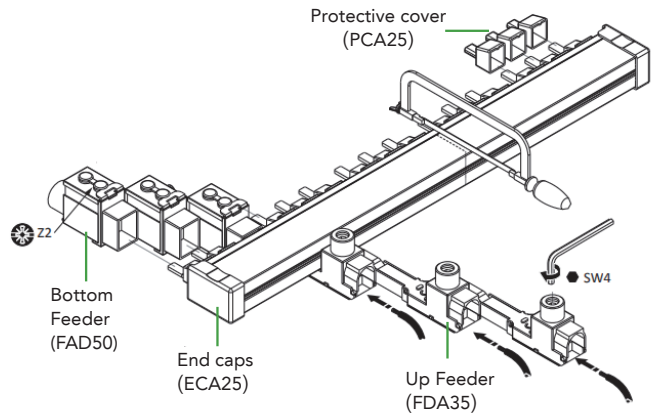
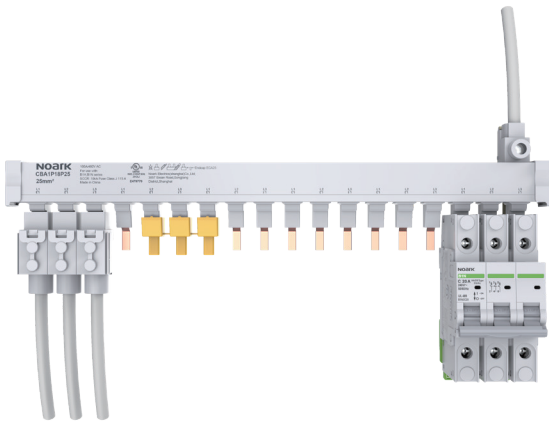


## CBA Comb busbar

### Assembly Instructions

**Attention:**

When busbars are cut, they must be deburred and completely cleaned of any dust and residual particles and parts from cutting process. Touch-proof only when used with the required end caps.



# NOARK®



NOARK Electric North America  
(626) 330-7007

na.noark-electric.com • nasales@noark-electric.com



Note: NOARK Electric reserves the right to make technical changes or modify the contents of this document without prior notice. With regard to purchase orders, the agreed particulars shall prevail. NOARK Electric nor any of its affiliates or subsidiaries shall be responsible or liable for potential errors or possible lack of information in this document. NOARK Electric reserves all rights in this document and in the subject matter and illustrations contained therein. Any reproduction, disclosure to third parties or utilization of its contents – in whole or in parts – is forbidden without prior written consent of NOARK Electric.